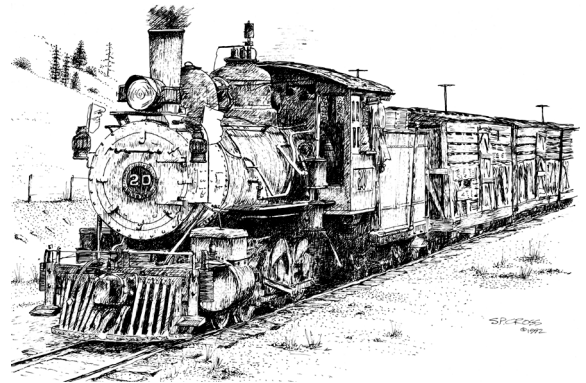


# ROCKY MOUNTAIN RAIL REPORT



APRIL 2007

No. 570

ROCKY MOUNTAIN RAILROAD CLUB • ROCKY MOUNTAIN RAILROAD HISTORICAL FOUNDATION

## Rio Grande Narrow Gauge

Presented by John Charles

April 10, 2007 • 7:30 PM

This slide show program features the last years of Denver & Rio Grande Western narrow gauge operation in southwestern Colorado and northern New Mexico. Starting with a hand full of slides taken by John's father in the 1950s, the bulk of the program will be slides taken by John on numerous trips to Narrow Gauge Country between September 1962 and September 1967. It will cover freight operations between Alamosa and Durango during all seasons of the year. Also included are slides from Rocky Mountain Railroad Club excursions between Alamosa and Silverton in 1963 and 1966, as well as a few shots of the Silverton Branch operation.

The doors will open about 6:45 PM. Members are encouraged to come early. Our meeting format will not include a break. Programs will end by 9 PM in order to tear down and store equipment and exit the church before 9:30 PM, per our contract.

Please come join us for an enjoyable, educational evening at Christ Episcopal Church at 2950 South University Boulevard, University at Bates, where there is plenty of off street parking at the rear of the complex. Enter into Barnes Hall, where we hold the monthly meetings, on the mid-south side doors. Please bring a guest. **All programs are intended to provide an educational experience on railroading. The general public is welcome to attend. There is no charge for this meeting.**

## D&IM No. 25 Open House

The Open House for D&IM interurban No. 25 will be Saturday, August 18th. We are striving to have most of the remaining, significant components completed on the car for this special event! Other items of interest will add to this fun activity and we will also have tables of books for sale at great prices. In fact, if you would like to do some of your "spring cleaning" during the summer and contribute railroad items for this sale, it would benefit the project. All proceeds go to the restoration and long term preservation of our rare, historic electric railway car. The open house will take the place of the regular monthly meeting so make a note on your calendar!

## Denver Rail Heritage Society Quarterly Meeting

The Denver Rail Heritage Society will hold their quarterly membership meeting at the REI Sporting Goods Store near 15th Street and the Platte River in Denver on Thursday, April 19 at 7:15 PM. Please park in the underground garage. Wally Weart will present a program about the Chicago, South Shore & South Bend Railroad in the late 1970s, showing vintage freight and passenger equipment in operation.

The public is welcome and refreshments will be served. For further info contact Darrell Arndt at 303-797-8444.

## 2007 RMRRRC Calendar

May 8 Meeting	Mexican Narrow Gauge
June 16 Event	Como – South Park Day
July 21 Event	Club Day At The Colorado Railroad Museum
August 18 Event	Denver & Intermountain Car 25 Roll Out
September 29 Event	Annual Luncheon Banquet
October 9 Meeting	To Be Announced
November 13 Meeting	To Be Announced
December 11 Meeting	Annual Meeting

The Club's future program listing is limited to three or four months. This will provide members adequate advance information for planning. Proposed 2007 meeting dates are shown. Due to circumstances beyond our control programing and dates are subject to change without notice. Please contact Joe McMillan at [jmcmillan20@comcast.net](mailto:jmcmillan20@comcast.net) or phone 303-456-4564 with program ideas.

The deadline for items to be included in the *May Rail Report* is 4/16/07.

Steve Cross at Colorado Railroad Graphics (303-699-9174) provided the drawing of RGS engine number 20 for the *Rail Report* cover. Other railroad artwork is available.

## From The President

By Jim Ehernberger

We want to thank Ron Hill (not the Ron Hill connected with the Colorado Railroad Museum) for his fine presentation on Tasmania. All reports received after the meeting seemed very positive and this indeed was an educational experience for those in attendance. The nice weather brought out a lot of faces we had not seen for quite a while.

John Charles, an accomplished photographer and former railroader, will be presenting the April program. You will enjoy viewing the Rio Grande narrow gauge during the twilight years. The final revenue freight operations between Alamosa, Durango and Farmington took place in 1968 – nearly 40 years ago! A segment of this line is still operated during the summer and fall by the Cumbres & Toltec Scenic Railroad between Antonito, Colorado, and Chama, New Mexico.

Please refer to our calendar on page one. During this summer season we will try something different instead of monthly meetings at the church. We will have an event each month. These will be planned to be educational experiences and the public is invited.

On June 16th we will make a field trip to Como and other points along the old South Park railroad. This will be handled by Pat Mauro, a board member who is also associated with the historical society at Bailey.

We will go to the Colorado Railroad Museum on July 21st since this will be one of their summer steam-up days. We'll call this Rocky Mountain Railroad Club Day at the museum.

On August 18th the annual roll out for the Denver & Intermountain Car 25 at the Federal Center will take place. Things are shaping up with the restoration efforts. We hope restoration will be completed by the end of 2008, which will signify the 20th anniversary of this project. We encourage you to attend this event, because we expect to offer a lot of great items (many books, magazines, etc.) that

have been donated to sell to fund the restoration. This event will kick off our fall fund raising campaign.

The annual Club luncheon / banquet will be held on September 29th. Of course, we will furnish details later on. The lateness of this date is because we were not able to acquire the facility due to their current expansion creating demands on early reservations.

Next year the Rocky Mountain Railroad Club will be celebrating our 70th anniversary. If you haven't obtained a copy of the chronological history of the Club and Foundation, *Journeys to Yesteryear*, by Dave Goss, you should do so, as it provides a definitive account of the Club's history, along with many fine illustrations.

Look at the March *Rail Report* for ordering information and the special \$19.95 price offer for this book. These books are offered for sale at our regular monthly meetings, along with videos and other items we offer.

Looks like the end of the track for this month. Thank you very much

Members may contact me at:  
RMRRCPresident@sisna.com  
Phone: 307-637-4011  
Rocky Mountain Railroad Club - President  
PO Box 2391  
Denver, CO. 80201-2391

### A Celebration of Life For Jack Morison

The celebration of Jack's life will be held at 11:00 AM on Saturday, April 28, 2007, at the Grace United Methodist Church.

Grace Church is located at 4905 East Yale Avenue in Denver. It is located on the north side of the street about 3 blocks west of the Yale and I-25 interchange.

### Publishers Statement Rocky Mountain Rail Report

The Rocky Mountain Rail Report (ISSN 1040-9223) is published by the Rocky Mountain Railroad Club and the Rocky Mountain Railroad Historical Foundation. First class postage paid at Denver, Colorado. Postmaster: Send address changes to the Rocky Mountain Rail Report, PO Box 2391, Denver, CO 80201-2391

### Club Information

Rocky Mountain Railroad Club  
PO Box 2391  
Denver, CO 80201-2391  
Website: <http://www.rockymtnrrclub.org>

### Membership Information

Membership in the Rocky Mountain Railroad Club may be obtained by sending the annual dues to the Club address listed above. Regular membership dues are \$35.00. Overseas regular membership dues are \$45.00. Contributing membership is \$50.00. Sustaining membership is \$70.00. Patron membership is \$100.00. Golden membership is \$500.00. An associate membership for spouses and children is \$25.00 additional. Members joining after April may send a payment of \$3.00 for each month remaining in the year.

Members of the Rocky Mountain Railroad Club are also members in the Rocky Mountain Railroad Historical Foundation, the non-profit arm of the Rocky Mountain Railroad Club.

### Club Officers

President	Jim Ehernberger
Vice President - Projects	Darrell Arndt
Vice President - Programs	Herb Edwards
Secretary	Roger Sherman
Treasurer	Jimmy Blouch

### Board Meetings

Members are always welcome to attend any board of directors meeting. Please contact any Club officer for the date, time and location.

### Newsletter Contributions

Newsletter contributions and items for publication should be sent to:

Bruce Nall, Editor  
Rocky Mountain Rail Report  
PO Box 620579  
Littleton, CO 80162-0579  
Fax: 303-978-0402  
E-mail: [selectimag@aol.com](mailto:selectimag@aol.com)



Bob Richardson (left) works on the No. 20 with Ed Haley on July 16, 1958. Stanley Hutchinson photo, Jim Ehernberger collection.

*In Remembrance*

**Robert W. Richardson**

1910-2007

On February 24, 2007, the railfan community lost one of its most prestigious railfans of all time. Bob Richardson passed away peacefully in his sleep while in the hospital in State College, Pennsylvania.

Mr. Richardson was born May 21, 1910, in Rochester, Pennsylvania. He grew up and graduated from high school in Ohio. He moved to Colorado in 1948 after serving in the Army Signal Corps during World War II. Along with Carl Helfin he opened the Narrow Gauge Motel near Alamosa and began collecting railroad memorabilia.

It was during this time period that Colorado's remaining narrow gauge lines were beginning to rapidly vanish. Bob Richardson lobbied against abandonment of these lines and he has been given credit for achieving more than any other person to preserve Colorado's railroad heritage.

Bob Richardson and Cornelius Hauck co-founded the Colorado Railroad Museum which opened during 1959 in Golden. Most of the railroad memorabilia originally located at Narrow Gauge Motel in Alamosa was relocated to Golden, Colorado. Bob served as executive director until his retirement in 1991.

Mr. Richardson had been a member of the Rocky Mountain Railroad Club since 1949. Through his generosity the Club was able to have their railroad equipment on display both at the Alamosa and Golden locations.

Bob's many accomplishments will never be forgotten. His wit and knowledge will be missed throughout the railfan world.

The Colorado memorial service will be 2:00 PM on May 5, 2007 at the Colorado Railroad Museum. A Pennsylvania memorial is tentatively scheduled this month.

**OS Colorado**

**Current Railroad Happenings**

By Chip Sherman

"OS" are the initials for On the Sheets, a reference to what station agents did to notify the train dispatcher that a train had passed his/her station and been noted on the train register. OS Colorado is a joint effort to note the rail activities occurring in and around Colorado.

**Amtrak Protection Train Set Positioned at Denver**

Amtrak's late running eastbound winter California Zephyr trains prompted Amtrak to move a spare Superliner set (protection train set) to Denver on train 5 arriving at Denver Union Station on 3/4/07. The 9-car train with P42DC 25 was parked on track three. It was there until 3/17/07. Amtrak train 6 had operated over 12-hours late due to heavy snow in early March 2006 on Union Pacific's (ex-Southern Pacific) Donner Pass in eastern California. Heavy UP traffic delayed Amtrak trains between Winnemucca and Sparks, Nevada.

The protection train set had:

- Amtrak P42DC 25
- Baggage car 1707
- Sleeper 39019, 32055 and 32067
- Dining car 38042
- Lounge 33039
- Coaches 34097, 34039 and 34029

**Vestas Wind Turbine Plant Locates Along Great Western Railway East of Windsor, Colorado**

Great Western Railway landed a Denmark based wind turbine manufacturing facility east of Windsor, Colorado. The Omnitrax owned railway was an important factor in locating the Vestas manufacturing plant. In November 2006 Vestas filed with Dutch security regulations that it planned to open two plants in 2007 – one in the United States and another in Spain.

Wind-turbine giant Vestas Wind Systems announced building a \$59.9 Million, 180,000-square-foot wind mill blade factory, the company's first U.S.

Continued on page 4, column 1

## OS Colorado

Continued from page 3, column 3

manufacturing plant. The plant will employ more than 400 workers.

Four years ago, Portland was considered the front-runner for Vestas' North American plant, but an industry retrenchment prompted the Denmark-based company to scrap its expansion plans. The company did, however, establish its U.S. headquarters in Portland and employs about 200 people in offices along Southwest Naito Parkway.

Vestas chose the 100-acre site in an industrial park just east of Windsor and had been in talks with landowner The Broe Group for months. The company manufactures blades and other turbine parts used in wind farms, a rapidly growing sector of the power industry.

Snagging a plant of such importance is considered a coup by those eager to anoint their state as leaders in renewable energy development. Colorado already boasts huge wind farms and the U.S. Department of Energy's National Renewable Energy Lab. The Vestas plant would add more green to its reputation.

In the past couple of years, wind-power development has been significant, and Vestas has established itself as a world leader in turbine manufacturing.  
—*The Oregonian contributed to this report*

### Union Pacific Tentative 2007 Steam Schedule

May 3 to May 31, 2007  
Northwest Trip

June 21 to July 4, 2007  
Cheyenne to North Platte and Return

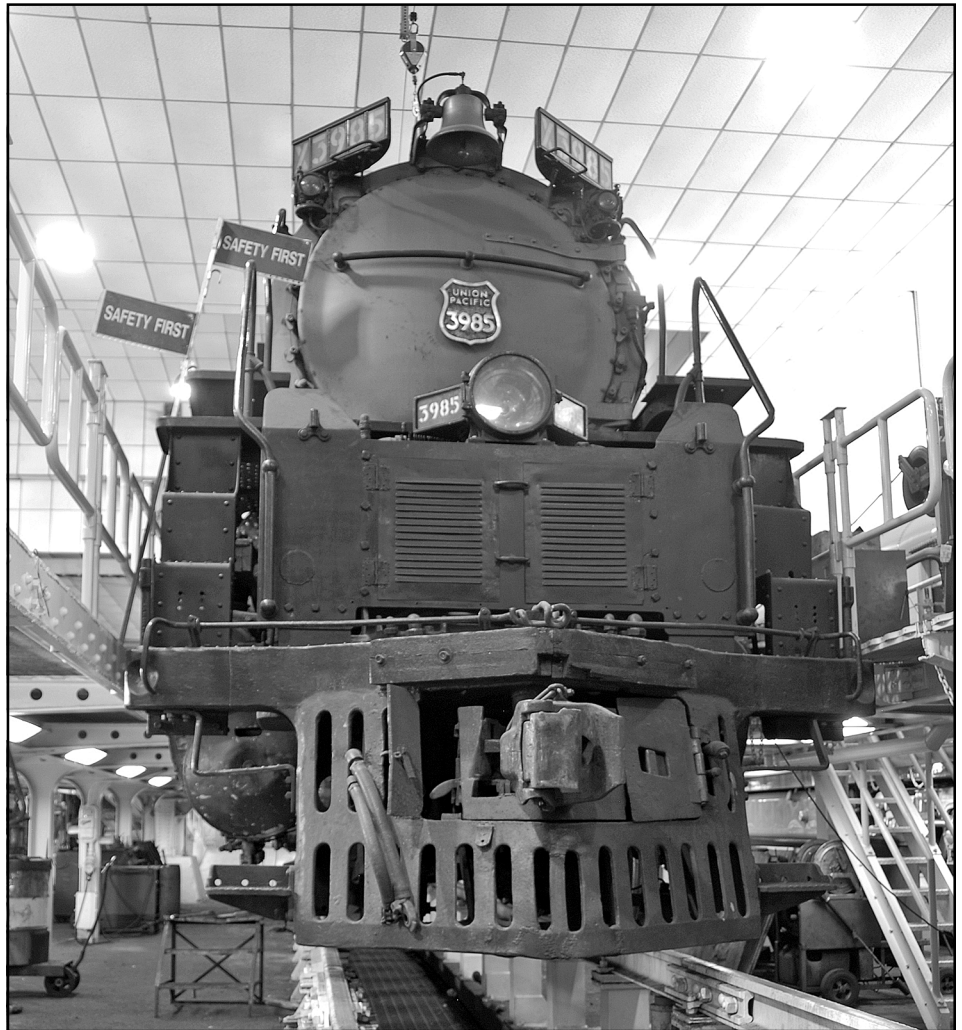
August 22 to 27, 2007  
Colorado State Fair Special

September 9 to 30, 2007  
Oklahoma Centennial

See <http://www.upsteam.com/schedule.html#schedule> for information  
—*Info courtesy Union Pacific RR*



Amtrak P42DC 25 provided head end power (HEP) to California Zephyr protection train set positioned at Denver on 3/4/07, track 3, Denver Union Station. The 9-car train was captured at sunset 3/8/07. Note the new Environmental Protection Agency Region 8 Headquarters Building (far right) opened in March 2007 on site of former US Post Office Terminal Annex. — Photo © 2007 by Chip.



Union Pacific Challenger 3985 was undergoing repairs on 1/29/07 at the Union Pacific's Steam Shop in Cheyenne, Wyoming. Work included threading new stay bolt holes. The doubleheader with UP 844 on the Cheyenne Frontier Days Train has been cancelled for 2007. UP 844 will be used July 19-23. — Photo © 2007 by Chip.



## Looking Back 70 Years

By Jim Ehernberger

Photos are from the Jim Ehernberger collection – photos on pages 5 & 6 are by Richard B. Jackson and photos on page 7 are by Otto Perry

Seventy years have now passed since the last narrow gauge passenger train operated between Leadville and Denver on the South Park Line. In 1937, on April 9th at 8:15 AM, the Colorado & Southern engine number 60 handled the final westbound two-car consist out of Denver Union Station (a box car was added after leaving the station) on its tri-weekly schedule with train number 70. At Como, engine 9 handled the train (with a flanger placed behind the locomotive) over Boreas Pass to Breckenridge, Dickey, Dillon, Climax and Leadville, arriving at its destination somewhat over two hours late because of delays with freight traffic.

At 7:15 AM on Saturday, April 10th, train number 71 departed Leadville for the last time. Engine 9, a regular on this run, handled the final historic trip from Leadville to Denver.

Both locomotives were saved from the scrapper's torch. Engine 60 is now displayed at Idaho Springs, and the 9-spot is currently at Silver Plume, out of service awaiting repairs.

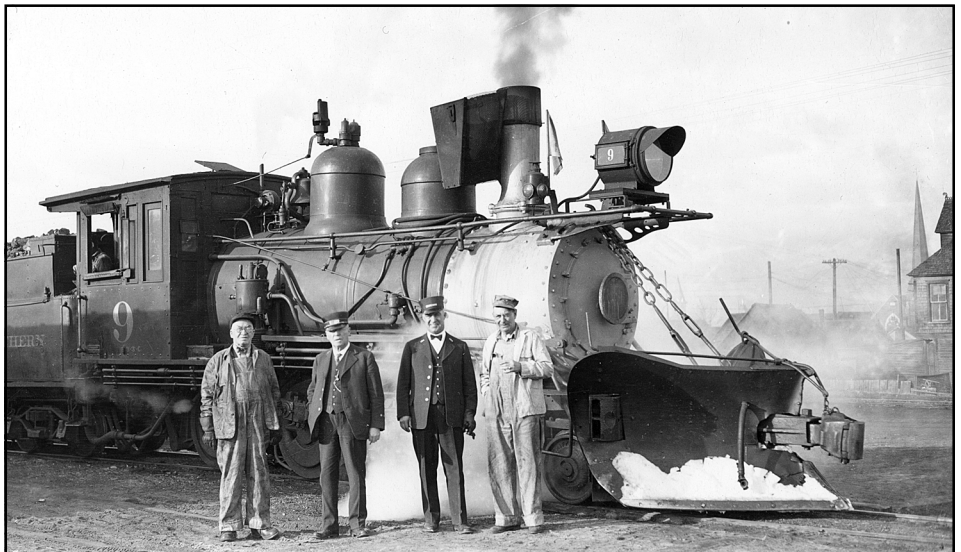
Among many witnessing this trip were several rail fan photographers, including Otto Perry of Denver, and Richard B. Jackson of Beverly Hills, California. The photos selected covering this historic event, were taken by Mr. Jackson.

### Otto Perry's Historic Views

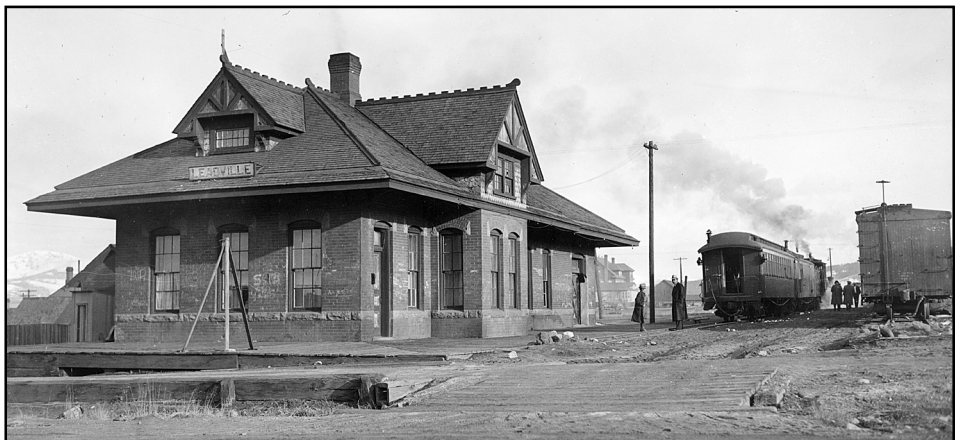
On Sunday, April 11, 1937, the Colorado and Southern operated the last revenue freight train between Como and Denver. Otto Perry made a special trip to photograph operations on this date. The last Alma turn from Como operated this day as well. However, the final revenue movements between Como and Leadville took place on the following day, a Monday, and unfortunately, neither Perry nor Jackson photographed this operation.



C&S engine 60 prepares to depart Denver Union Station with train number 71 for the last westward trip on April 9, 1937. The crew out of Denver were: T. St. John, Conductor; J. F. Farthing, engineer; Robert Terrill, Fireman; and Roy F. Hight, Brakeman. (Source: *Denver South Park and Pacific* by M. C. Poor quoting Denver Post).



On the morning of April 10, a final crew shot was made at Leadville prior to the early morning departure. Left to right: Engineer Patrick "Curly" Culligan; Conductor Thomas St. John; Brakeman Roy Haight; and Fireman Guy Halleck. (Source: *C&S High Line Memories and Then Some* by Tom and Denise Klinger from an article in Leadville's Herald Democrat).



Leadville's brick station (built in 1893, and now used by the Leadville, Colorado & Southern tourist operation) is where the agent sold the last ticket to Denver, and a final view was taken of the last passenger train on that fateful morning.



Engine 9 was serviced while passengers were allowed a lunch break at the historic Como hotel. This structure was constructed after the original building burned in 1896. – Two photos by Richard B. Jackson, Jim Ehernberger collection.



The last passenger train disappears through the South Platte Cañon signifying an end to direct Leadville service (via Boreas Pass) that started in October of 1884. In Poor's book it stated "there were twenty passengers who finished this last trip." Ed Haley wrote the author and said "I was at the station that Saturday evening, with tears in my eyes, when old number nine wheezed into the Denver depot with the last of the narrow gauge passenger trains."



Chicago, Burlington & Quincy engine 537 (leased to C&S, formerly used in the Black Hills) and C&S engine 72 are shown at Baileys, Colorado with the last eastward revenue freight train consisting of 47 cars, mostly empty stock cars, on April 11, 1937. Otto followed this train, taking numerous views, between Kenosha Pass and Baileys.



C&S engine 69 only handled a box car used for LCL (less than carload) shipments on the last train to Alma. Otto caught up with this train after it left Como at 11:40 AM.

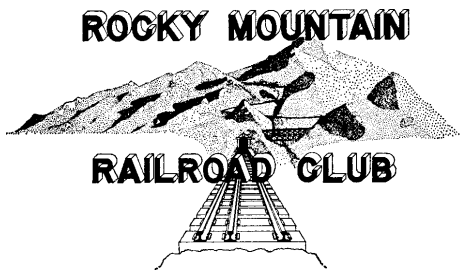


Engine 8 double headed the 69 on the last return movement from Alma to Como with only five freight cars and a caboose. It hardly seems there was a need for a helper. Otto made this image at 3:30 PM, near Fairplay, and stated they were making 10 m.p.h.

Denver, Grant, Breckenridge, Leadville									
Subject to abandonment of this line on or after December 12, 1936.									
70		71		72		73		74	
No.	Wa.	Miles	Ele-	Ele-	Tu.	Th.	Th.	Th.	AM
Fr.			vation	vation	Sat.	Sat.	Sat.	Sat.	
<b>TABLE No. 3</b>									
Mountain Time									
a	8.15	0.0	Lv.	Denver (Union Station)..	Ar	5183			PW
		2.0		South Park Jct.	Lv	5208			4.35
	8.30	3.4		Valverde		5220			4.31
f	8.33	4.6		Denver Mills		5248			4.28
f	8.37	5.9		Overland		5272			4.25
f	8.42	7.6		Sheridan Jct.		5289			4.20
f	8.47	11.1		MacRose		5376			4.11
		14.1		Chatfield		5417			4.02
f	8.51	16.8		Thomas		5423			3.56
f		20.0		Kassler		5497			3.48
f	9.01	20.4		Waterton		5509			3.46
		22.9		Intake		5608			f
f	9.15	24.5		Mill Gulch		5681			f 3.33
f	9.22	26.8		Strontia Springs		5859			f
f	9.33	29.4		South Platte		6093			f 3.14
		30.4		Vermillion		6127			f
f	9.40	31.4		Longview		6194			f
f	9.42	31.7		Dome Rock		6213			f 3.05
f	9.52	34.6		Dawsons		6392			f 2.54
f		35.0		Stone Spur		6416			f
f	9.57	36.0		Foxton		6461			f 2.49
f10.00		37.0		Argyle		6485			f 2.46
		38.0		Ferndale		6549			f
		38.2		Cloudcrest		6565			f
f10.07		39.0		Riverview		6604			f
f	10.10	39.6		Buffalo		6629			f 2.39
f		42.0		Bryn Mawr		6732			f
f10.22		42.4		Pine Grove		6753			f 2.32
f10.24		43.1		Crystal Lake		6765			f 2.27
f10.31		45.5		Haviland		6892			f
		45.7		Glenmore Lakes		6896			f
f10.33		46.0		Chff		6923			f 2.19
f10.41		47.7		Crossons		7073			f 2.14
f10.59		51.6		Estabrook		7594			f 2.02
f11.04		53.1		Insmont		7660			f 1.56
		53.7		Fairview		7689			f
f	11.09	54.6		Baileys		7735			f 1.52
f11.14		56.2		Glenisle		7831			f 1.48
		57.4		Ashrama		7926			f
f11.21		58.3		Maddox		8000			f 1.42
f11.23		58.9		Altruria		8027			f 1.40
f11.25		59.5		Shawnee		8067			f 1.38
f11.34		62.0		Long Meadow		8241			f 1.31
f11.36		62.5		Singleton		8285			f 1.28
f11.39		63.6		Waller		8353			f 1.26
f11.42		64.4		Cassels (Camp Santa Maria)		8419			f 1.23
f11.50		66.2	Ar	Grant	Lv	8576			f 1.18
f11.50		66.2	Lv	Grant	Ar	8576			f 1.18
f12.06		69.4		Webster		9011			f 1.06
f12.28		73.8		Hoosier		9700			f12.52
f12.40		76.2		Kenosha		9990			f12.44
f12.56		81.1		Jefferson		9507			f12.23
f	1.03	84.1		Michigan		9525			f12.14
f	1.40	88.3	Ar	Como	9796			f12.01	
f	1.53	91.6	Lv	Como	9796			f11.40	
f	2.08	94.0		Peabodys		10102			f11.30
f	2.40	98.8		Half Way		10549			f11.20
f	2.47	100.9		Boreas		11494			f11.05
f	2.57	103.8		Belmont		11104			f10.48
f	3.07	106.4		Bacon		10604			f10.26
f	3.23	110.0		Mayo Spur		10129			f10.10
f	3.31	113.3		Breckenridge		9568			f 9.54
f	3.31	113.3		Bradlocks		9243			f 9.40
f	3.40	116.5	Ar	Valdera	8205			f 9.30	
f	3.50	119.2	Ar	Dickey	9004			f 9.20	
f	4.00	116.5	Lv	Dillon	8840			f 9.20	
f	4.11	119.9		Dickey	9004			f 9.10	
f	4.18	122.0		Frisco	9099			f 9.00	
f	4.34	126.2		Curtin (Uneva Lake)	9297			f 8.55	
f	5.04	132.7		Scolltude	9756			f 8.43	
f	5.15	134.7		Kokomo	10613			f 8.22	
f	5.29	137.5		Robinson	10856			f 8.15	
f	5.32	137.6		Climax	11320			f 8.07	
f	5.56	144.8		Wortmans	11240			f 8.03	
f	5.56	144.8		Linderman	10848			f	
f	6.25	151.2	Ar	Birds Eye	10671			f 7.38	
				Leadville	10208			b 7.15	

**Reference Marks:** fStops on signal.  
 | Meals.  
 aMonday, Wednesday and Friday.  
 bTuesday, Thursday and Saturday.  
 Trains do not stop at stations where schedule figures or reference marks are not shown.

**A Note About Rail Fan Photography:**  
 Professional historians have been slow to acknowledge rail fan photography. On these pages are examples of the finest photographs ever made of these historic Colorado railroad events. During the heyday of railroad construction the first trains were photographed and, of course, are recognized as "making history" which they did. Perhaps one day in the not-too-distant future your photographs of railroad events will become historic too!



BOX 2391  
DENVER, COLORADO 80201

**FIRST CLASS**

FIRST CLASS MAIL  
U. S. Postage  
PAID  
Denver, Colorado  
Permit No. 1873



**Colorado Railroad Museum  
2007 Scheduled Special  
Operation Days**

For information call 303-279-4591  
Or See [http://www.crrm.org/train\\_trips.htm](http://www.crrm.org/train_trips.htm)

April 7	Bunny Express
April 14	ARM Conference
June 16 - 17	Father's Day
July 21	Wine and Cheese Train and RMRRRC Club Day
July 22	General Steam Up
September 15-16, 21-23	Day With Thomas
October 27	Trick-or-Treat Train
December 1 - 2	Santa Claus Special

Rocky Mountain Railroad Club Members in good standing, and upon presentation of a current membership card, are entitled to free admission. Members are invited to join the Colorado Railroad Museum (a Museum membership provides certain merchandise discounts), and members may participate in restoration or other maintenance programs as volunteers.

Please contact the volunteer coordinator at the CRRM, telephone 303-279-4591.

**Intermountain Chapter, NRHS 2006 Event Schedule**

For information call 303-298-0377

**Friday, April 20, 2007:** Dinner meeting at Rossi's Catering. Former state representative and current executive director of Rocky Mountain Rail Authority, Bob Briggs, is our speaker. His program is "The Re-establishment of Colorado's First Interstate Transportation System - Passenger Rail." Bob has a long and distinguished history as a local businessman, elected official, and a member of various volunteer and professional organizations.

Menu: To be announced on your Dinner Reminder

Card. Cost: \$14 per person (pays for dinner, room rental, tax, and tip). As usual, reservations only - no drop-ins. No-shows are billed by the Chapter. Call the Chapter office (303-298-0377). All reservations and any cancellations must be made by Noon, Friday, the day of the program. If you must call Rossi's at 303-296-1144, please make sure they take your name along with the number in your party. Cash bar opens at 6:30 PM, dinner is at 7:00 PM, and the program is at 8:00. If you are not joining us for dinner, but want to see the program, you should arrive by 7:45 PM.

**Trains Unlimited, Tours 2007 Tentative Trip Schedule**

Discounts on tours are available to Club members.

Just provide your Rocky Mountain Railroad Club membership number.

For TUT information call 1-800-359-4870

or visit our Club web page at: [www.trainsunlimitedtours.com/rmrrc/](http://www.trainsunlimitedtours.com/rmrrc/)

May 13-28	Steam In Poland	September 26-29	Rio Grande Durango Adventure
August 24-26	Domes To Feather River RR Days	October 5-8	Modoc Rail Adventure
September 8-16	Railroads Of Ecuador	October 6-14	New England Fall Colors
September 21	Georgetown Loop Railroad	October 8	Black Hills Central Railfan Day
September 23	Rio Grande La Veta Pass I	October 13-18	Rocky Mountain Express - Private Cars, Oakland to Denver
September 24	Rio Grande La Veta Pass II	Oct. 26 - Nov. 16	Argentinian Rail Adventure
		November 8-15	Mexican Copper Canyon